

# GRID INDEX MAP




## BANEPA MUNICIPALITY

Kavrepalanchok District, Bagmati Province, Nepal



Scale 1:4,805

### LEGEND

-  SRN (Highway)
-  SRN (Highway-Feeder)
-  Grid Index

*Banepa is a municipality and historical town in a valley situated at about 1,500 m (4,900 ft) above sea level in central Nepal which is at about 25 kilometers (16 mi) east from Kathmandu. At the time of the 2011 Nepal census, it has a population of 67,690. The main attraction of Banepa is the temple of Chandeswori, located approximately 1 km (0.62 mi) northeast of the town along the Rudramati River. The Dhaneshwor Temple is 1 KM south of the town. Banepa is also known for its eight different temples of Lord Ganesh, Narayankhan (the temple of Lord Narayan), Bhimsankhan (the temple of Lord Bhimsen) and eight different ponds*

### Project Information

This map and associated Geographic Information System database has been developed during FY 2023 / 2024 under GEO CODE Nepal Engineering Consultancy

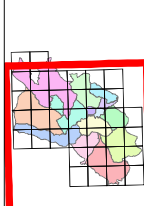
The maps and associated information are submitted to Banepa Municipality, Bagmati Province, Nepal, for authentication from the owner's and GEO CODE NEPAL Engineering Consultancy required for the usage and for publication of the maps and information to other parties in a part or whole.

Contour and Elevation information are based on 1:25000 Topographic Map of Survey Department of Nepal.

Administrative boundaries are collected from the District Survey, Field Survey and Secondary data sources like Department of Survey, Mapless, Census 2078, Municipality Profile.

This map has been prepared using the Drone Survey, Field Survey and Secondary data sources like Department of Survey, Mapless, Census 2078, Municipality Profile.

### Location Map



### Coordinate / Projection System

False Easting ..... 500000 m Easting  
 False Northing ..... 0 m Northing  
 Scale Factor at central ..... 0.999 96  
 Latitude of origin ..... 0  
 Units ..... Meter  
 Spheroid ..... Everest 1830 ( 1937 Adjustment )  
 Prime Meridian ..... Meiodical Convention/Indian Meridian  
 Vertical Datum/Indian Mean Sea Level (MSL)

### Client:

Banepa Municipality  
 Office of the Municipal Executive  
 Bagmati Province, Nepal

### Consultant:

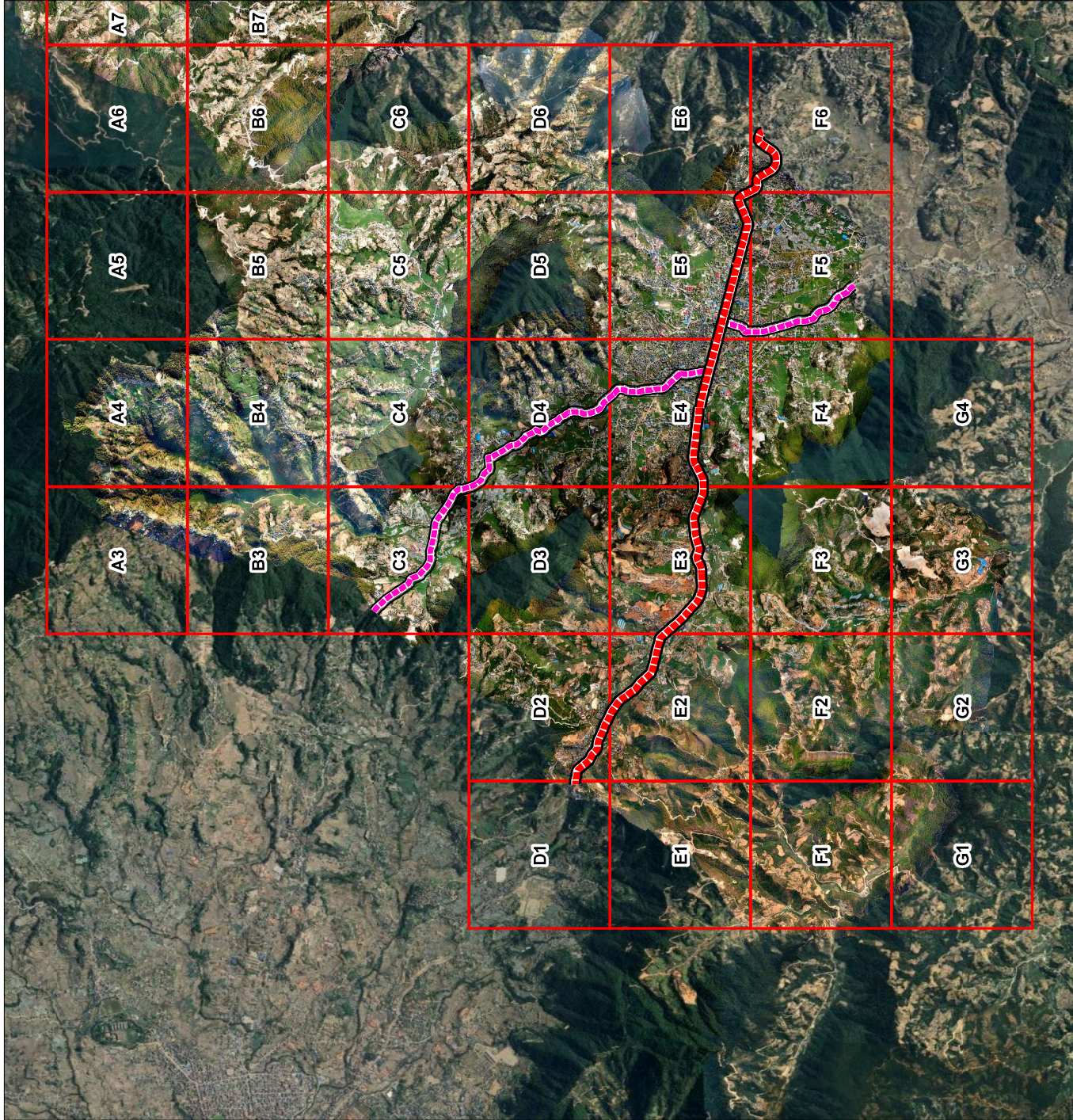
GEO CODE Nepal Engineering Consultancy



### Source:

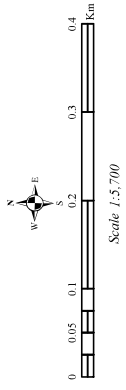
Administrative Boundary/Banepa Municipality  
 GIS Database Data/ Department of Survey (GDS) & UAP Survey

Project FY: 2067/ 81



# MTMP MAP - A3

**BANEPA MUNICIPALITY**  
Kavrepalanchok District, Bagmati Province, Nepal



## LEGEND

### MTMP\_ROAD\_2081\_Final

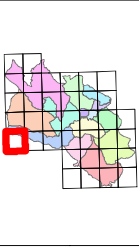
- A Class Road (1.5 m)
- B Class Road (1.1 m)
- C Class Road (8 m)
- - - D Class Road (6-7m)
- - - Others
- Line Milaune
- - - SRN (Highway)
- - - SRN (Highway-Feeder)
- Temple

Banepa is a municipality and historical town in a valley situated at about 1,500 m (4,900 ft) above sea level in central Nepal which is at about 25 kilometers (16 mi) east from Kathmandu. At the time of the 2011 Nepal census, it has a population of 67,690. The main attraction of Banepa is the temple of Chandeswori, located approximately 1 km (0.62 mi) northeast of the town along the Rudramati River. The Dhaneshwor Temple is 1 KM south of the town. Banepa is also known for its eight different temples of Lord Ganesh, Narayankhan (the temple of Lord Narayan), Bhimsenkhani (the temple of Lord Bhimsen) and eight different ponds

### Project Information

This map and associated Geographic Information System database has been developed during FY 2023 / 2024 under GEO CODE Nepal Engineering Consultancy.  
The maps and associated information are submitted to Banepa Municipality, Bagmati Province, Nepal, for publication. The maps and information are for the use and publication of the maps and information by other parties in a part or whole.  
Contour and Elevation information are based on 1:25000 Topographic Map of Survey Department of Nepal.  
Administrative boundaries are collected from the Department of Survey (DoS).  
This map has been prepared using the Drone Survey, Field Survey and Secondary data sources like Department of Survey, Google, Census 2078, Municipality Profile.

### Location Map

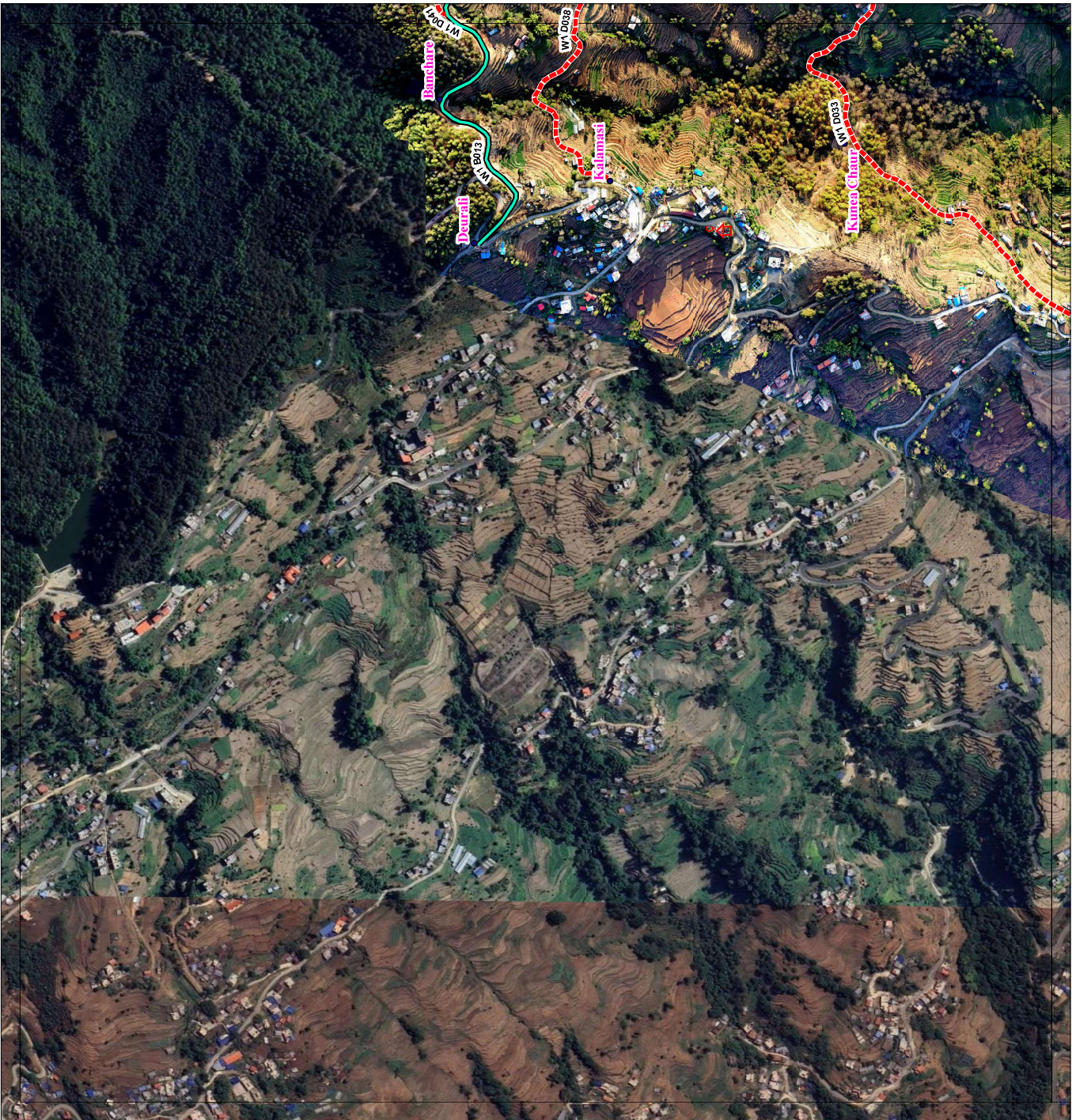


### Coordinate / Projection System

False Easting ..... 500000 m Easting  
False Northing ..... 0 m Northing  
Scale Factor at central ..... 0.999 96  
Latitude of origin ..... 0  
Units ..... Meter  
Spheroid ..... Everest 1830 ( 1937 Adjustment )  
Prime Meridian ..... Modified Greenwich Mean Time  
Vertical Datum/Indian Mean Sea Level (MSL)

Client:  
Banepa Municipality  
Office of the Municipal Executive  
Bagmati Province, Nepal

Consultant:  
GEO CODE Nepal Engineering Consultancy



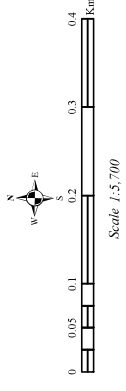
Source:  
Administrative Boundary/Banepa Municipality  
GIS Database Data/ Department of Survey (GDS) & UAF Survey

Project FY: 2082/81

# MTMP MAP - A4

## BANEPDA MUNICIPALITY

Kavrepalanchok District, Bagmati Province, Nepal



### LEGEND

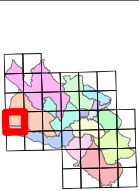
- MTMP\_ROAD\_2081\_Final**
  - A Class Road (1.5 m)
  - B Class Road (1.1 m)
  - C Class Road (8 m)
  - D Class Road (6-7m)
  - Others
  - Line Mileaune
  - SRN (Highway)
  - SRN (Highway-Feeder)
  - Buspark
- Public Building
- Temple
- Tourist Area

*Banepda is a municipality and historical town in a valley situated at about 1,500 m (4,900 ft) above sea level in central Nepal which is at about 25 kilometers (16 mi) east from Kathmandu. At the time of the 2011 Nepal census, it has a population of 67,690. The main attraction of Banepda is the temple of Chandeswori, located approximately 1 km (0.62 mi) northeast of the town along the Rudramati River. The Dhameswori Temple is 1 KM south of the town. Banepda is also known for its eight different temples of Lord Ganesh, Narayankhan (the temple of Lord Narayan), Bhimsankhan (the temple of Lord Bhimsen) and eight different ponds*

### Project Information

This map and associated Geographic Information System database has been developed during FY 2023 / 2024 under GEO CODE Nepal Engineering Consultancy.  
 The maps and associated information are submitted to Banepda Municipality, Bagmati Province, Nepal, for publication. From the owner's and GEO CODE NEPAL Engineering Consultancy required for the usage and for publication of the maps and information by other parties, in a part or whole.  
 Contour and Elevation information are based on 1:25000 Topographic Map of Survey Department of Nepal.  
 Administrative boundaries are collected from the Department of Survey (DoS).  
 This map has been prepared using the Drone Survey, Field Survey and Secondary data sources like Department of Survey, Google, Census 2078, Municipality Profile.

### Location Map



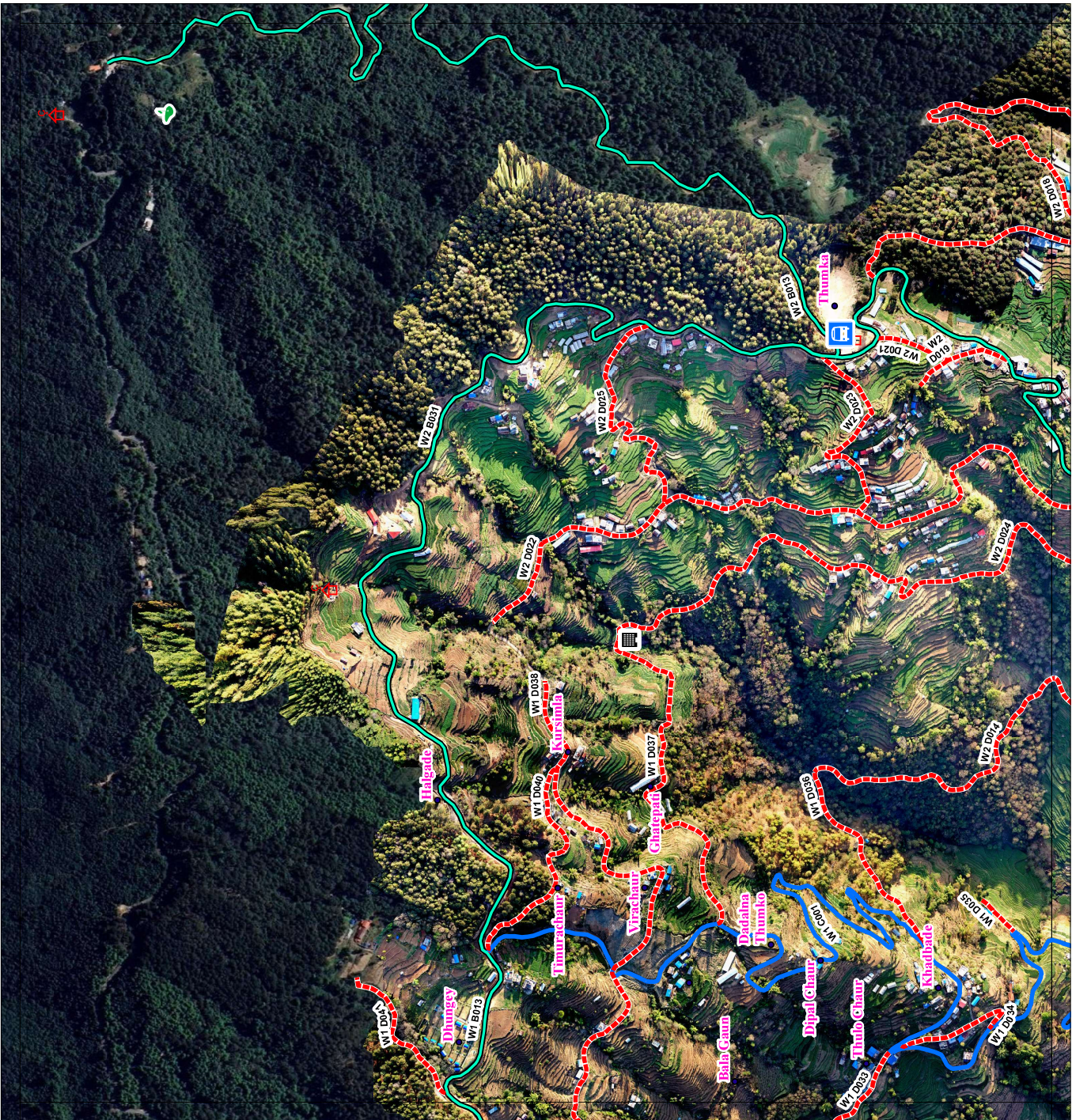
### Coordinate / Projection System

False Easting ..... 500000 m Easting  
 False Northing ..... 0 m Northing  
 Scale Factor at central ..... 0.999 94  
 Latitude of origin ..... 0  
 Units ..... Meter  
 Spheroid ..... Everest, 1830 ( 1937 Adjustment )  
 Projection ..... Modified Universal Transverse Mercator  
 Vertical Datum/Indian Mean Sea Level (MSL)

Client: Banepda Municipality  
 Office of the Municipal Executive  
 Bagmati Province, Nepal

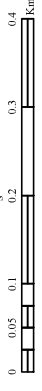
Consultant: GEO CODE Nepal Engineering Consultancy

Source: Administrative Boundary/Banepda Municipality  
 GIS Database Data/ Department of Survey (GDS) & UAT Survey  
 Project FY: 2080/ 81



# MTMP MAP - A5

**BANEPA MUNICIPALITY**  
Kavrepalanchok District, Bagmati Province, Nepal



Scale 1:5,700

## LEGEND

### MTMP\_ROAD\_2081\_Final

- A Class Road (15 m)
- B Class Road (11 m)
- C Class Road (8 m)
- D Class Road (6-7m)
- Others
- Line Mileaune
- SRN (Highway)
- SRN (Highway-Feeder)
- Public Security

*Banepa is a municipality and historical town in a valley situated at about 1,500 m (4,900 ft) above sea level in central Nepal which is at about 25 kilometers (16 mi) east from Kathmandu. At the time of the 2011 Nepal census, it has a population of 67,690. The main attraction of Banepa is the temple of Chandeswori, located approximately 1 km (0.62 mi) northeast of the town along the Rudramati River. The Dhameshwor Temple is 1 KM south of the town. Banepa is also known for its eight different temples of Lord Ganesh, Narayanhari (the temple of Lord Narayan), Bhimsenharin (the temple of Lord Bhimsen) and eight different ponds*

### Project Information

This map and associated Geographic Information System database has been developed during FY 2023 / 2024 under GEO CODE Nepal Engineering Consultancy

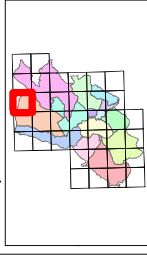
The maps and associated information are submitted to Banepa Municipality, Bagmati Province, Nepal, for publication. From the owner's and GEO CODE NEPAL Engineering Consultancy required for the usage and for publication of the maps and information by other parties, in a part or whole.

Contour and Elevation information are based on 1:25000 Topographic Map of Survey Department of Nepal.

Administrative boundaries are collected from the Department of Survey (DoS)

This map has been prepared using the Drone Survey, Field Survey and Secondary data sources like Department of Survey, Mapbox, Census 2078, Municipality Profile.

### Location Map



### Coordinate / Projection System

False Easting	500000 m	Easting
False Northing	0 m	Northing
Scale Factor at central	0.999 96	
Latitude of origin	0	
Units	Meter	
Spheroid	Bhaya 1958 (1957 adjustment)	
Prime Meridian	Mean Indian Ocean Meridian	
Vertical Datum	Indian Mean Sea Level (MSL)	

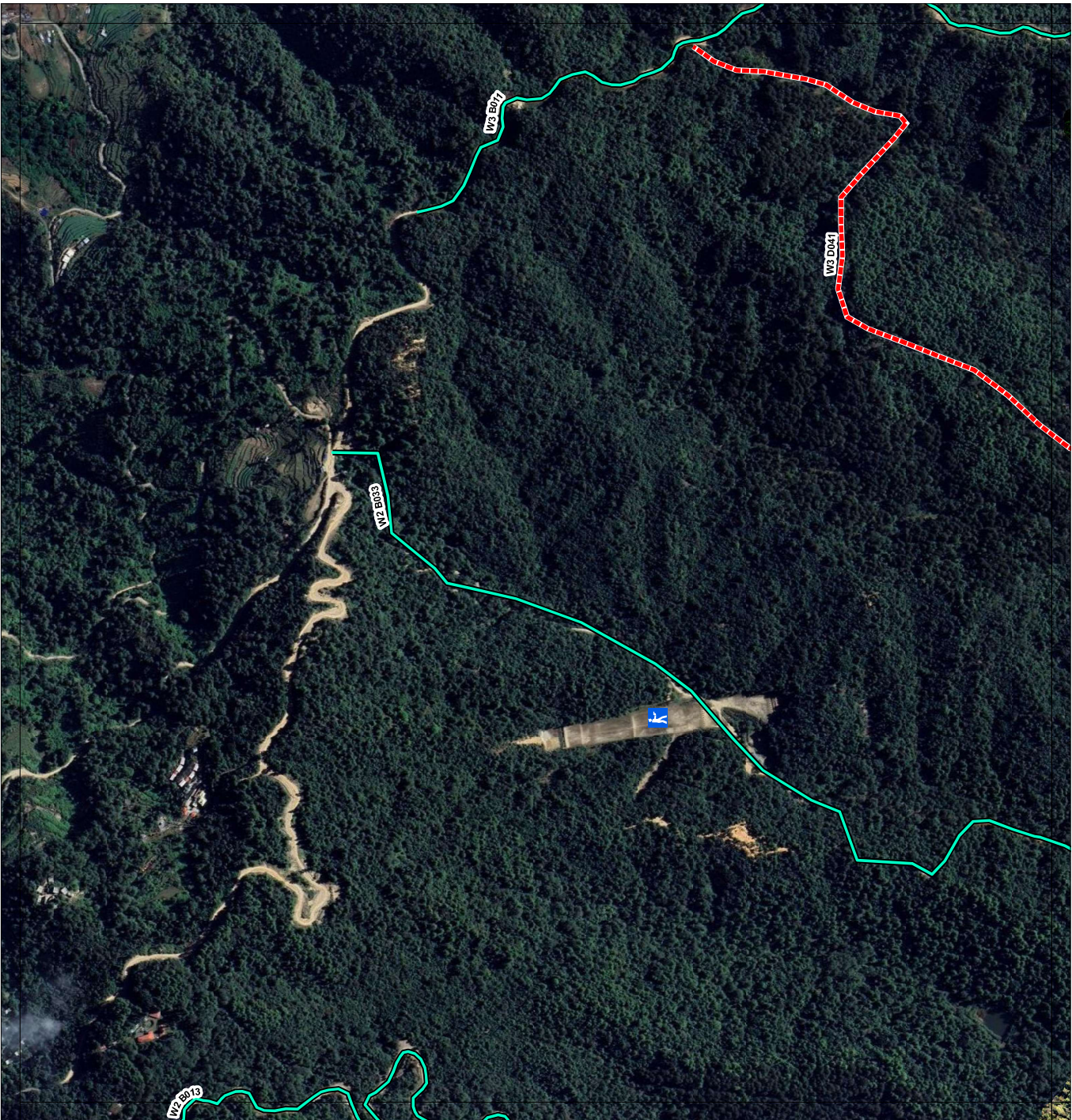
Client:  
Banepa Municipality  
Office of the Municipal Executive  
Bagmati Province, Nepal

Consultant:  
GEO CODE Nepal Engineering Consultancy



Source:  
Administrative Boundary/Banepa Municipality  
DoS Database Data/ Department of Survey (DoS) & UAP Survey

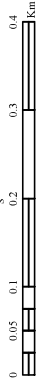
Project FY: 2082/81



# MTMP MAP - A6

## BANEPA MUNICIPALITY

Kavrepalanchok District, Bagmati Province, Nepal



Scale 1:5,700

### LEGEND

#### MTMP\_ROAD\_2081\_Final

- A Class Road (15 m)
- B Class Road (11 m)
- C Class Road (8 m)
- D Class Road (6-7m)
- Others
- Line Milaune
- SRN (Highway)
- SRN (Highway-Feeder)

*Banepa is a municipality and historical town in a valley situated at about 1,500 m (4,900 ft) above sea level in central Nepal which is at about 25 kilometers (16 mi) east from Kathmandu. At the time of the 2011 Nepal census, it has a population of 67,690. The main attraction of Banepa is the temple of Chandeswori, located approximately 1 km (0.62 mi) northeast of the town along the Rudramati River. The Dhaneshwor Temple is 1 KM south of the town. Banepa is also known for its eight different temples of Lord Ganesh, Narayankhan (the temple of Lord Narayan), Bhimsenkhani (the temple of Lord Bhimsen) and eight different ponds*

#### Project Information

This map and associated Geographic Information System database has been developed during FY 2023 / 2024 under GEO CODE Nepal Engineering Consultancy

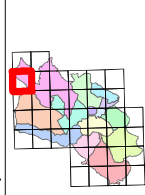
The maps and associated information are submitted to Banepa Municipality, Bagmati Province, Nepal, authorization from the owner's, and GEO CODE NEPAL Engineering Consultancy required for the usage and for publication of the maps and information by other parties, in a part or whole.

Contour and Elevation information are based on 1:25000 Topographic Map of Survey Department of Nepal.

Administrative boundaries are collected from the Department of Survey (DoS)

This map has been prepared using the Drone Survey, Field Survey and Secondary data sources like Department of Survey, Mapbox, Census 2078, Municipality Profile.

#### Location Map



#### Coordinate / Projection System

False Easting ..... 500000 m Easting  
 False Northing ..... 0 m Northing  
 Scale Factor at central ..... 0.994 84  
 Latitude of origin ..... 0  
 Units ..... Meter  
 Spheroid ..... Everest 1830 ( 1937 Adjustment )  
 Prime Meridian ..... Madagascars/Panama/Mean  
 Vertical Datum/Indian Mean Sea Level (MSL)

#### Client:

Banepa Municipality  
 Office of the Municipal Executive  
 Bagmati Province, Nepal

#### Consultant:

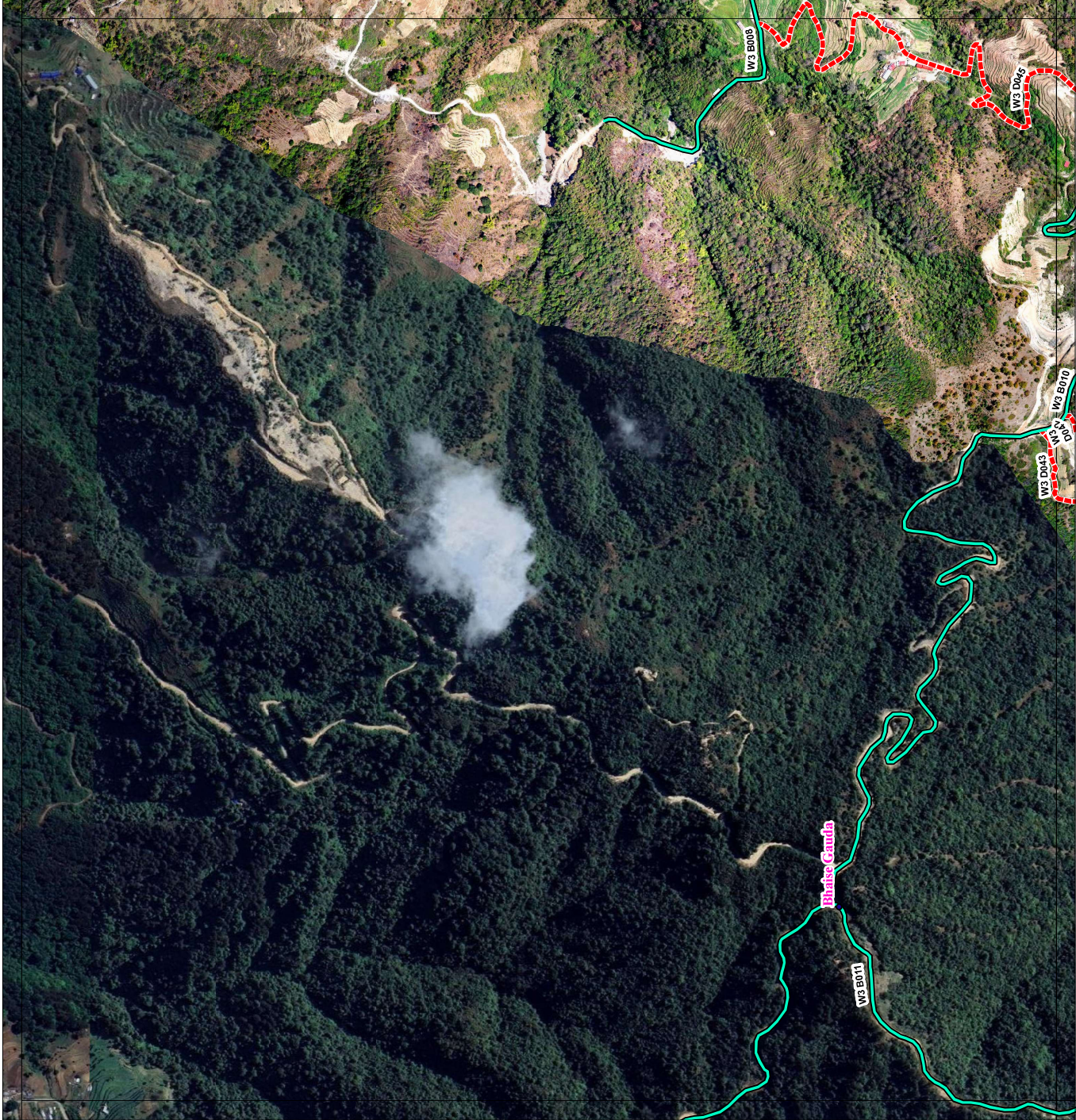
GEO CODE Nepal Engineering Consultancy



#### Source:

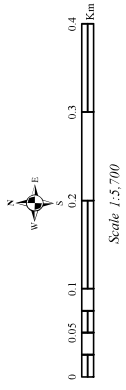
Administrative Boundary/Banepa Municipality  
 DoS Database Data/ Department of Survey (2078) & UAV Survey

#### Project FY: 2080/ 81



# MTMP MAP - A7

**BANEPA MUNICIPALITY**  
Kavrepalanchok District, Bagmati Province, Nepal



## LEGEND

- MTMP\_ROAD\_2081\_Final** Temple
- A Class Road (15 m)
  - B Class Road (11 m)
  - C Class Road (8 m)
  - D Class Road (6-7m)
  - Others
  - Line Milaune
  - SRN (Highway)
  - SRN (Highway-Feeder)
  - Public Building

*Banepta is a municipality and historical town in a valley situated at about 1,500 m (4,900 ft) above sea level in central Nepal which is at about 25 kilometres (16 mi) east from Kathmandu. At the time of the 2011 Nepal census, it has a population of 67,690. The main attraction of Banepta is the temple of Chandeswori, located approximately 1 km (0.62 mi) northeast of the town along the Rudramati River. The Dhaneshwor Temple is 1 KM south of the town. Banepta is also known for its eight different temples of Lord Ganesh, Narayanhan (the temple of Lord Narayan), Bhimsenhan (the temple of Lord Bhimsen) and eight different ponds*

### Project Information

This map and associated Geographic Information System database has been developed during FY 2023 / 2024 under GEO CODE Nepal Engineering Consultancy

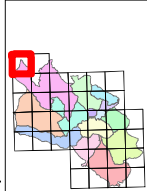
The maps and associated information are submitted to Banepta Municipality, Bagmati Province, Nepal, authorization from the owner's, and GEO CODE NEPAL Engineering Consultancy required for the usage and for publication of the maps and information by other parties, in a part or whole.

Contour and Elevation information are based on 1:25000 Topographic Map of Survey Department of Nepal.

Administrative boundaries are collected from the Department of Survey (DoS)

This map has been prepared using the Drone Survey, Field Survey and Secondary data sources like Department of Survey, Mapbox, Census 2078, Municipality Profile.

### Location Map



### Coordinate / Projection System

False Easting	.....500000 m Easting
False Northing	.....0 m Northing
Scale Factor at central	.....0.999 94
Latitude of origin	.....0
Units	Meter
Zone	.....48 R ( 1917 Adjustment )
Projection	.....Modified Universal Transverse Mercator
Vertical Datum	Indian Mean Sea Level (MSL)

Client:  
Banepta Municipality  
Office of the Municipal Executive  
Bagmati Province, Nepal

Consultant:  
GEO CODE Nepal Engineering Consultancy



Source:  
Administrative Boundary/Banepta Municipality  
GIS Database Data/ Department of Survey (GDS) & UAP Survey

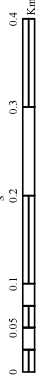
Project FY: 2082 / 81



# MTMP MAP - B3

## BANEPSA MUNICIPALITY

Kavrepalanchok District, Bagmati Province, Nepal



Scale 1:5,700

### LEGEND

- |                      |                     |
|----------------------|---------------------|
| A Class Road (15 m)  | Education Institute |
| B Class Road (11 m)  | Temple              |
| C Class Road (8 m)   | Tourist Area        |
| D Class Road (6-7m)  |                     |
| Others               |                     |
| Line Milaunte        |                     |
| SRN (Highway)        |                     |
| SRN (Highway-Feeder) |                     |
| Bridge               |                     |

### MTMP\_ROAD\_2081\_Final

Banepsa is a municipality and historical town in a valley situated at about 1,500 m (4,900 ft) above sea level in central Nepal which is at about 25 kilometers (16 mi) east from Kathmandu. At the time of the 2011 Nepal census, it has a population of 67,690. The main attraction of Banepsa is the temple of Chandeswori, located approximately 1 km (0.62 mi) northeast of the town along the Rudramati River. The Dhaneshwor Temple is 1 KM south of the town. Banepsa is also known for its eight different temples of Lord Ganesh, Narayankhan (the temple of Lord Narayan), Bhimsenkhani (the temple of Lord Bhimsen) and eight different ponds

### Project Information

This map and associated Geographic Information System database has been developed during FY 2023 / 2024 under GEO CODE Nepal Engineering Consultancy

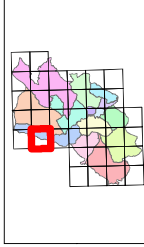
The maps and associated information are submitted to Banepsa Municipality, Bagmati Province, Nepal, for their review and approval. The maps and information are for the use and publication of the maps and information by other parties, in a part or whole.

Contour and Elevation information are based on 1:25000 Topographic Map of Survey Department of Nepal.

Administrative boundaries are collected from the Department of Survey (DoS)

This map has been prepared using the Drone Survey, Field Survey and Secondary data sources like Department of Survey, Mapbox, Census 2078, Municipality Profile.

### Location Map



### Coordinate / Projection System

False Easting	500000 m
False Northing	0 m
Scale Factor at central	0.999 96
Latitude of origin	0
Units	Meter
Spheroid	Ellipsoid 1983 ( 1987 Adjustment )
Prime Meridian	Modified Universal Prime Meridian
Vertical Datum	Indian Mean Sea Level (MSL)

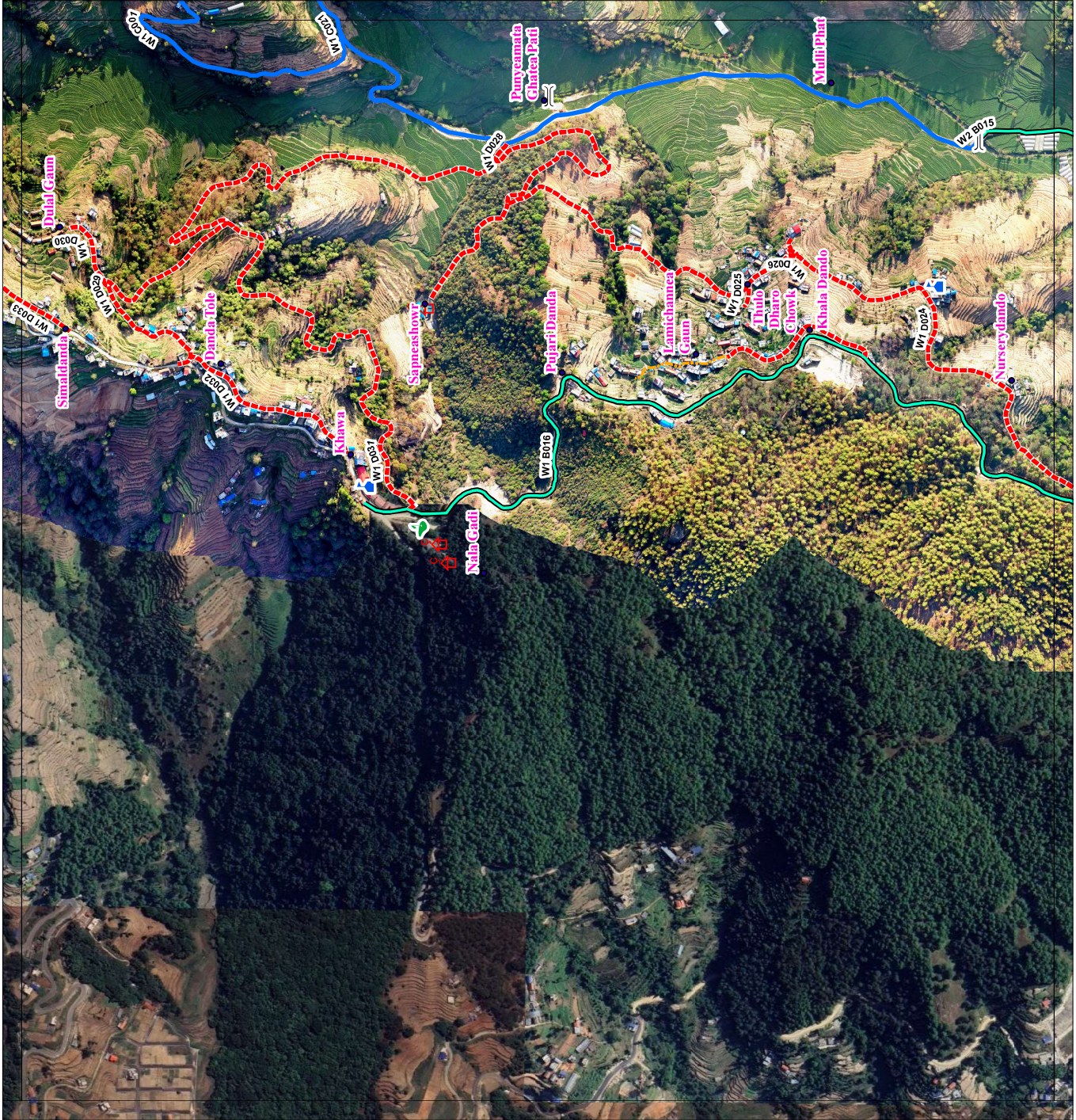
Client:  
Banepsa Municipality  
Office of the Municipal Executive  
Bagmati Province, Nepal

Consultant:  
GEO CODE Nepal Engineering Consultancy



Source: Administrative Boundary/Banepsa Municipality, GIS Database Data, Department of Survey (GDS) & UAV Survey

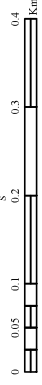
Project FY: 2082 / 81



# MTMP MAP - B4

## BANEPA MUNICIPALITY

Kavrepalanchok District, Bagmati Province, Nepal



Scale 1:5,700

### LEGEND

#### MTMP\_ROAD\_2081\_Final

- A Class Road (15 m)
- B Class Road (11 m)
- C Class Road (8 m)
- D Class Road (6-7m)
- Others
- Line Milaune
- SRN (Highway)
- SRN (Highway-Feeder)
- + Church

- Education Institute
- Health Post
- Public Building
- Temple

*Banepa is a municipality and historical town in a valley situated at about 1,500 m (4,900 ft) above sea level in central Nepal which is at about 25 kilometers (16 mi) east from Kathmandu. At the time of the 2011 Nepal census, it has a population of 67,690. The main attraction of Banepa is the temple of Chandeswori, located approximately 1 km (0.62 mi) northeast of the town along the Rudramati River. The Dhaneshwor Temple is 1 KM south of the town. Banepa is also known for its eight different temples of Lord Ganesh, Narayankhan (the temple of Lord Narayan), Bhimsenkhani (the temple of Lord Bhimsen) and eight different ponds*

#### Project Information

This map and associated Geographic Information System database has been developed during FY 2023 / 2024 under GEO CODE Nepal Engineering Consultancy

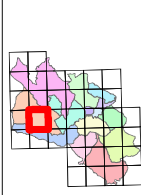
The maps and associated information are Submitted to Banepa Municipality, Bagmati Province, Nepal. Authorization from the owner's and GEO CODE NEPAL Engineering Consultancy required for the usage and for publication of the maps and information in a part or whole.

Contour and Elevation information are based on 1:25000 Topographic Map of Survey Department of Nepal.

Administrative boundaries are collected from the Department of Survey (DoS)

This map has been prepared using the Drone Survey, Field Survey and Secondary data sources like Department of Survey, Mapbox, Census 2078, Municipality Profile.

#### Location Map



#### Coordinate / Projection System

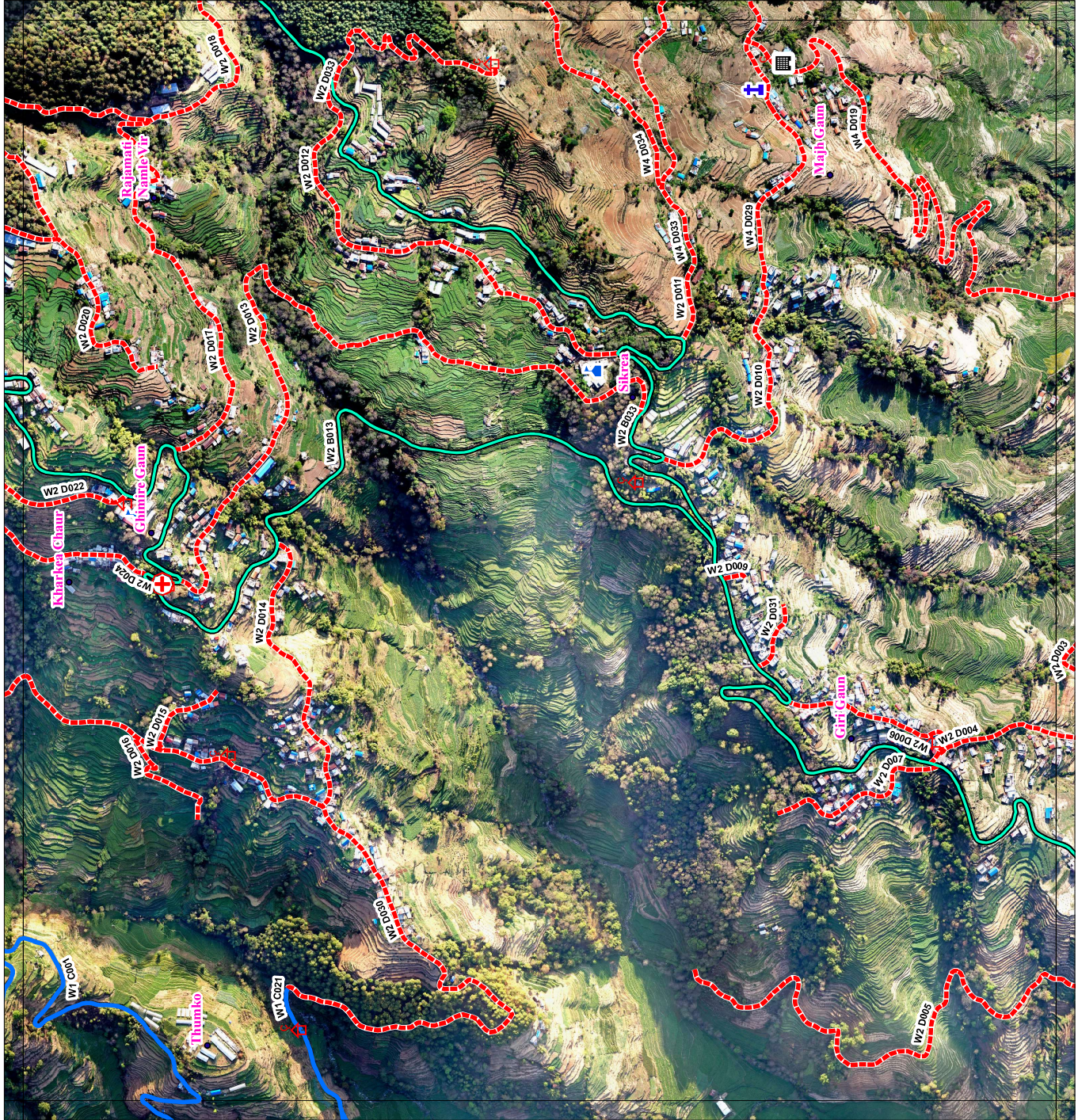
False Easting	500000 m Easting
False Northing	0 m Northing
Scale Factor at central	0.999 94
Latitude of origin	0
Units	Meter
Shrinkage	0.999 1981 ( 1987 Adjustment )
Projection	Modified Universal Transverse Mercator
Vertical Datum	Indian Mean Sea Level (MSL)

Client:  
Banepa Municipality  
Office of the Municipal Executive  
Bagmati Province, Nepal

Consultant:  
GEO CODE Nepal Engineering Consultancy

Source:  
Administrative Boundary/Banepa Municipality  
GIS Database Data/ Department of Survey (GDS) & UAF Survey

Project FY: 2080/ 81



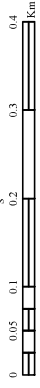




# MTMP MAP - B6

## BANEPA MUNICIPALITY

Kavrepalanchok District, Bagmati Province, Nepal



Scale 1:5,700

### LEGEND

**MTMP\_ROAD\_2081\_Final** Temple

A Class Road (15 m)

B Class Road (11 m)

C Class Road (8 m)

D Class Road (6-7m)

Others

Line Mileaune

SRN (Highway)

SRN (Highway-Feeder)

Education Institute

Baneपा is a municipality and historical town in a valley situated at about 1,500 m (4,900 ft) above sea level in central Nepal which is at about 25 kilometers (16 mi) east from Kathmandu. At the time of the 2011 Nepal census, it has a population of 67,690. The main attraction of Baneपा is the temple of Chandeswor, located approximately 1 km (0.62 mi) northeast of the town along the Rudramati River. The Dhaneshwor Temple is 1 KM south of the town. Baneपा is also known for its eight different temples of Lord Ganesh, Narayankhan (the temple of Lord Narayan), Bhimsankhan (the temple of Lord Bhimsen) and eight different ponds

### Project Information

This map and associated Geographic Information System database has been developed during FY 2023 / 2024 under GEO CODE Nepal Engineering Consultancy

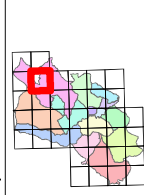
The maps and associated information are Submitted to Baneपा Municipality, Bagmati Province, Nepal authorization from the owner's and GEO CODE NEPAL Engineering Consultancy required for the usage and for publication of the maps and information by other parties in a part or whole.

Contour and Elevation information are based on 1:25000 Topographic Map of Survey Department of Nepal.

Administrative boundaries are collected from the Department of Survey (DoS)

This map has been prepared using the Drone Survey, Field Survey and Secondary data sources like Department of Survey, Mapbox, Census 2078, Municipality Profile.

### Location Map



### Coordinate / Projection System

False Easting ..... 500000 m Easting  
 False Northing ..... 0 m Northing  
 Scale Factor at central ..... 0.999 96  
 Latitude of origin ..... 0  
 Units ..... Meter  
 Spheroid ..... Everest 1830 ( 1937 Adjustment )  
 Prime Meridian ..... Greenwich  
 Vertical Datum/Indian Mean Sea Level (MSL)

Client:  
 Baneपा Municipality  
 Office of the Municipal Executive  
 Bagmati Province, Nepal

Consultant:  
 GEO CODE Nepal Engineering Consultancy



Source:  
 Administrative Boundary/Baneपा Municipality  
 DoS Database Data/ Department of Survey (DoS) & UAP Survey

Project FY: 2081/ 81

